

2025

1:1 Student iPad Program Parent Information and Consultation

1:1 STUDENT
IPAD PROGRAM
OUR COMMUNITY CREATING FUTURES



Our Vision

- Our vision is to provide continuous learning opportunities that enrich our students' lives, not just in the immediate moment, but for their future too.
- Technology is our enabler in this vision.
- Our current students will leave their education and enter a workforce where currently, many professions do not yet exist. It is our responsibility to prepare our students and future proof their learning.



We use technology to:

Spark curiosity

Free the imagination

Inspire creativity

Engage in
diverse learning
opportunities

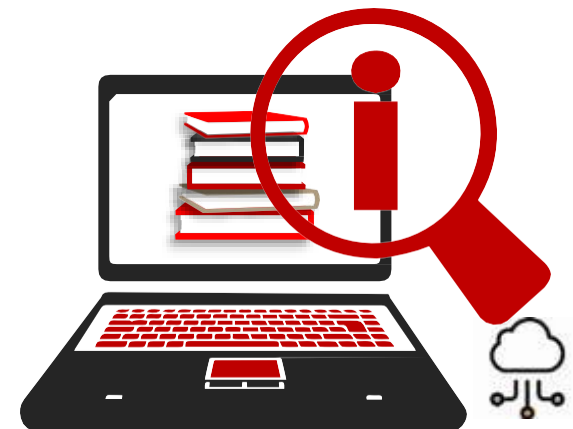
Encourage global and digital citizenship



What is 1 to 1 @CSSS?

From 2024:

- Universal devices from Year 3 to Year 6
- Optional device in Year 2
- School devices only in Prep and Year 1



- Coomera Springs has adopted a Universal device approach to 1:1 Learning in our middle - upper school.
- This means that every student for Year 3 and above will be expected to utilise an iPad during class time for specific learning activities. Year 2 will remain an optional program.
- This approach aligns to Version 9 of the Australian Curriculum which embeds digital pedagogy in every KLA.
- Students who have their own device will have **greater access** to technology and flexible learning styles and spaces. Students are strongly encouraged to purchase their own device for use at school.



What are the benefits of 1:1?

- 1:1 is a functional approach to learning enabling enhanced access to curriculum resources, creativity in learning outcomes and flexibility in learning styles
- Flexible learning spaces
- Real time learning where collaboration and feedback are immediate and critical
- Hands on learning through real time apps
- 24/7 ability to access
- Great opportunity to learn associated skills and appropriate etiquette - collaboration & feedback
- Workflow of apps that speak to each other



Australian Curriculum Version 9

General Capabilities – Digital Literacy

- Create, manage, communicate and investigate data, information and ideas, and solve problems.
- Students to work collaboratively at school and in their lives beyond school.
- Students critically identify, select and use digital devices or systems
- Students adapt to new ways of doing things as technologies evolve, and protect the safety of themselves and others in digital environments.



Will my child be disadvantaged if I don't join the program?

- **Students with iPads will have more flexibility to learn in different ways and demonstrate their knowledge in a way that best showcases their true capability.**
- All students in each class still access the Australian Curriculum appropriate for their year level.
- All students will still access modern and well-maintained technology.
- BYOD is simply another way of engaging students within a dynamic and interactive learning environment.
- All of our teachers at Coomera Springs run highly organised and efficient classrooms, regardless of whether 1:1 or not.



iPad Work Samples



iPads in the classroom

- iPads are learning tools – they DO NOT replace traditional teaching methods or lesson delivery.
- Interactive and engaging method of delivery - iPads target content delivery to a new generation of learners.
- Immediate feedback - Educational apps and programmes provide feedback on the spot.

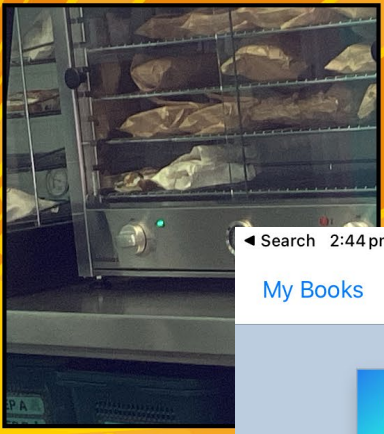


Book Creator

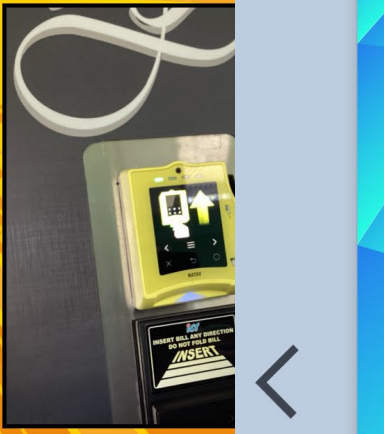
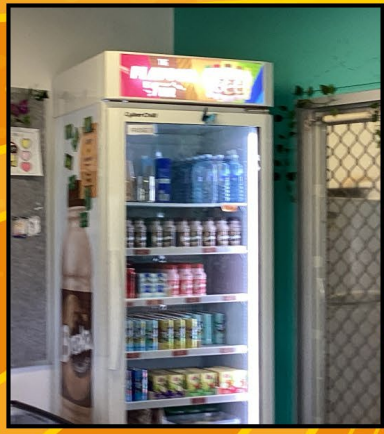


Students can create content for information reports, and record what they've written.





LIGHT



Search 2:44 pm Mon 28 Oct

My Books Pages Undo

Page 2 (of 3)

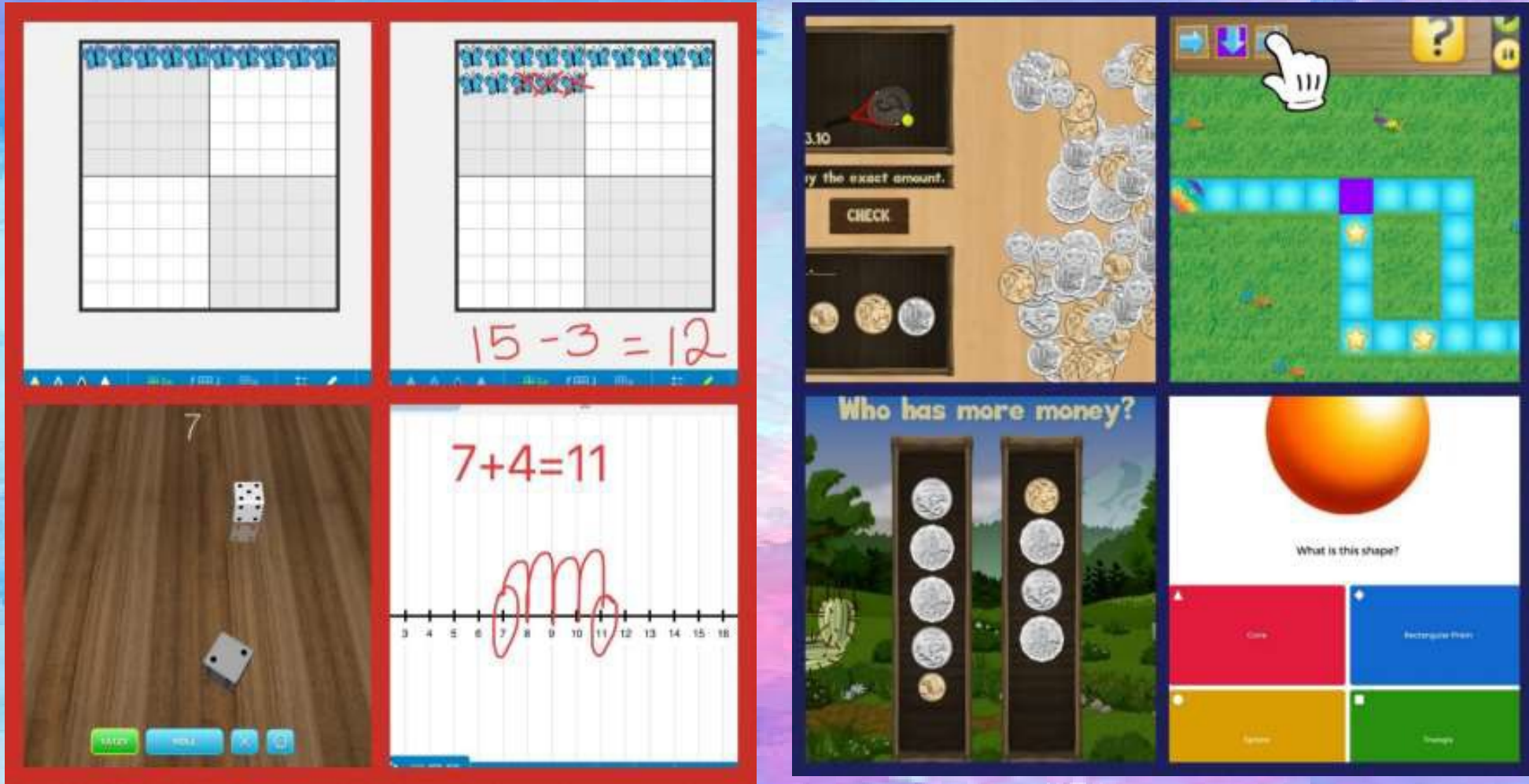
64%



SOUND



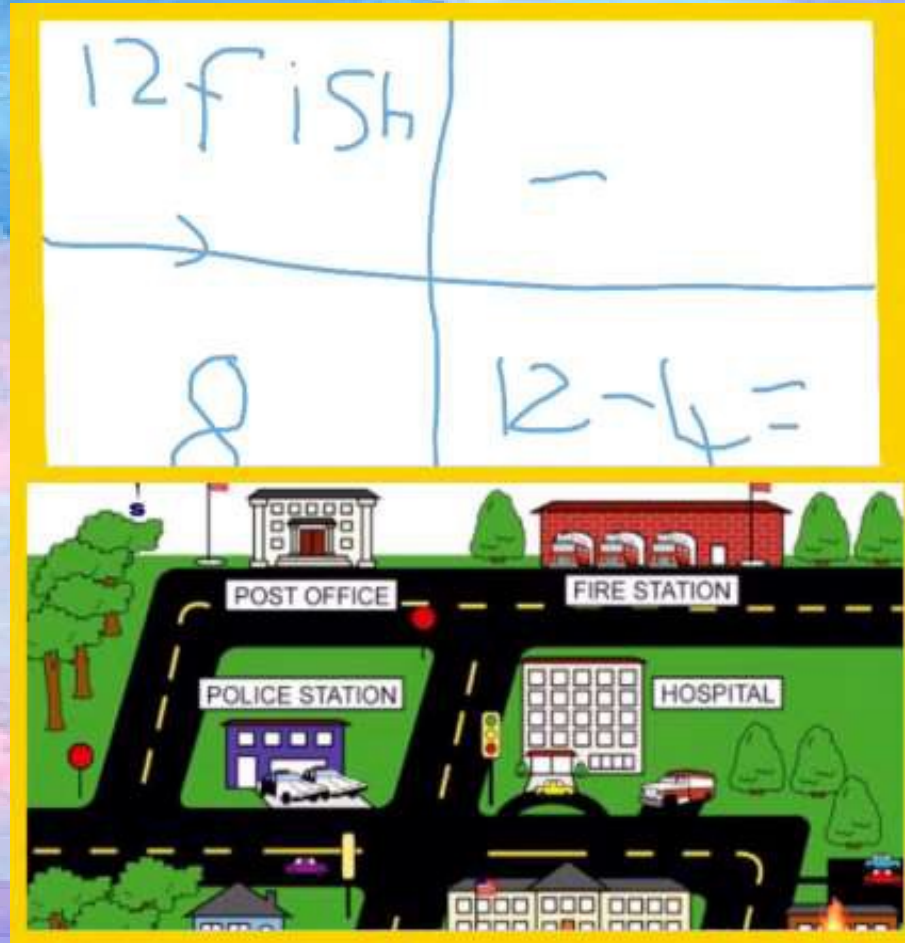
Maths Concepts



Students use interactive maths tools like number lines, hundreds boards and dice rolling apps to support their learning in basic maths concepts.



Self Talk Interactive Skills



Students use their digital whiteboard to record themselves progressing through their thinking and problem solving.



Literacy Skills

Blue Words

<u>an</u>	<u>by</u>	<u>if</u>	<u>as</u>
<u>do</u>	<u>go</u>	<u>no</u>	<u>me</u>
my	so	up	or

st	sm	sn	sp	sw
stop	smile	snow	span	swag
star	smart	snap	spin	swan
	small	stan	spider	swim

Rhyming Words Sort

hook ⚓ look ●●

scratch trick pick ↙

chat that 🗣️

claw 🐾 fan 🎐

long and short -i word sort

if I can apply grade-level phonics to solve unknown words.

zip ⚡	hide 🐭
pin 📌	line 📏
win 🏆	peak 🏔️
twirl 🌀	write 📝
fish 🐟	few 🍷
swim 🏊	five 🖐️
hill 🏞️	drive 🚗
lip 🗨️	live 🏠

2	3	4

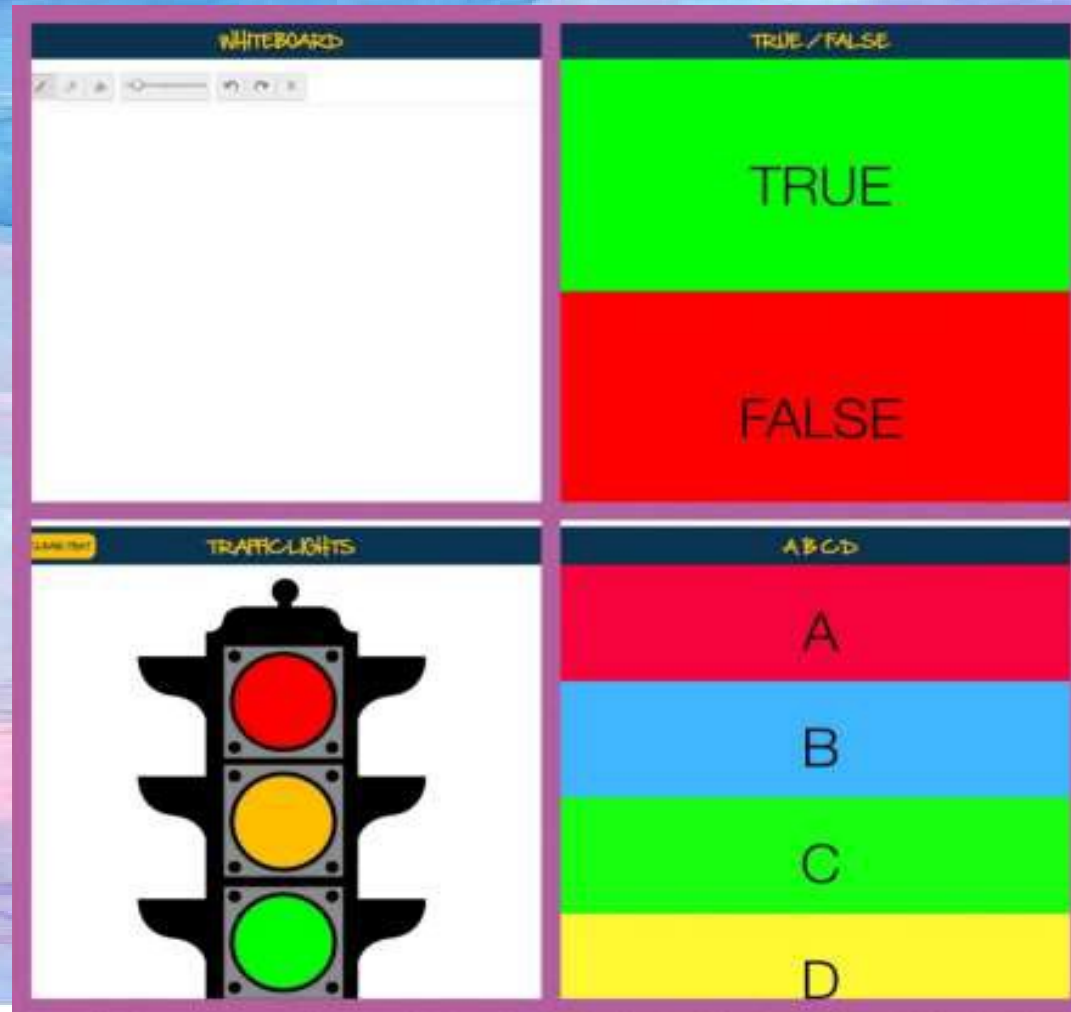
ee magic words y

knee	so	silly
glee	three	bunny
lady	go	funny
bee		baby
see		
tree		

Student record themselves reciting their tricky words, then listen back to reflect or receive feedback. Word sorts can be done on the screen, saving paper.



Self Monitoring and Reflection



These apps allow students to non-verbally indicate their understanding and reflect on what they've learned.



Classroom Protocols

- iPads are ALWAYS cared for and treated with respect
- Devices are never shared
- Students use targeted apps and programmes during lessons- Teacher directed.
- iPads come to school fully charged and in their case.
- iPads must be in the student's bag when arriving at or leaving school. No iPads out at the bus stop for example.





Year 2 STEM Investigation Powerpoint

Year 2, Term 2, 2023
STEM Assessment Part B
Butterfly Investigation Presentation

- Digital presentation made by: Van
- Class: 2B





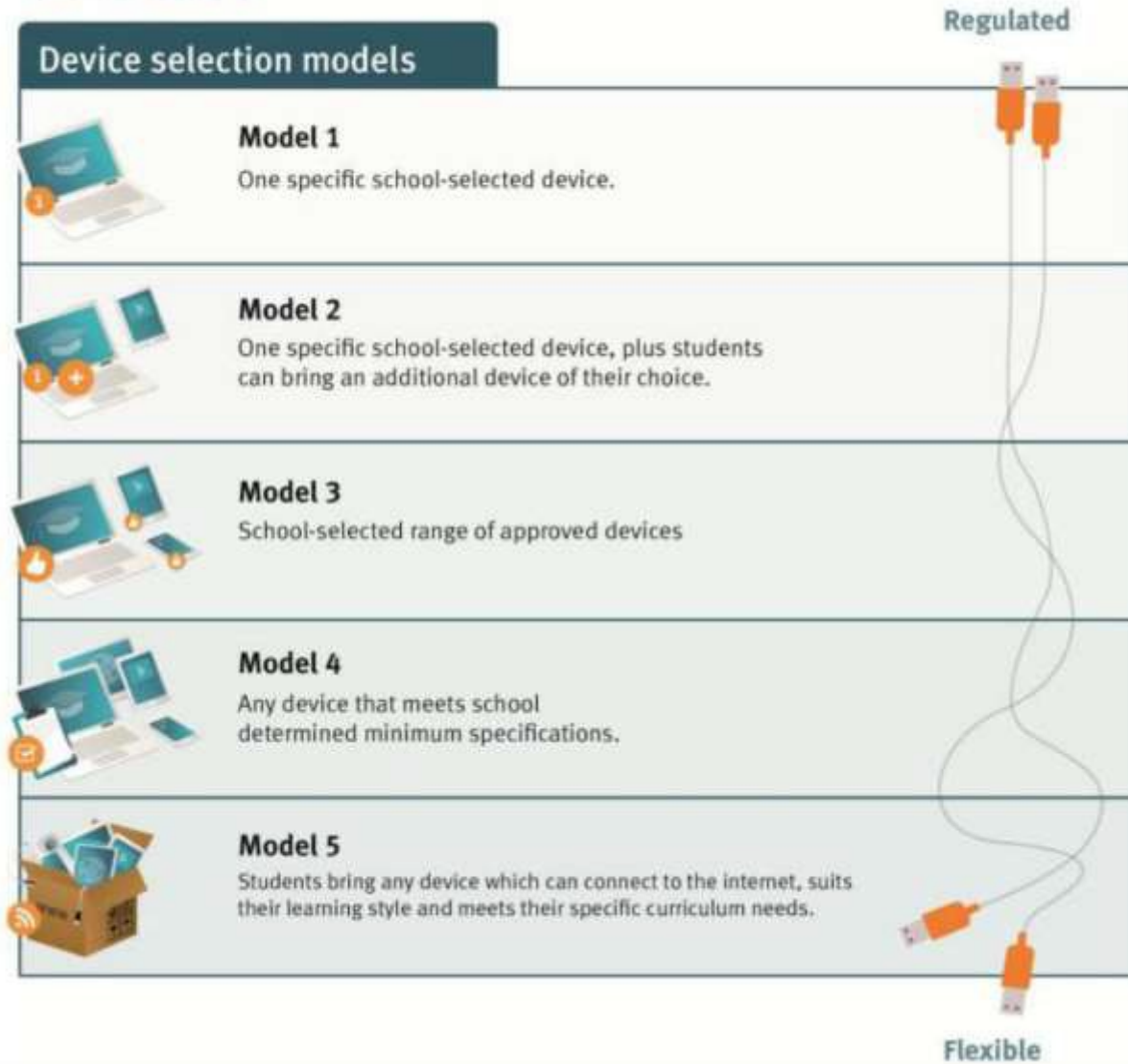
Features of Coomera Springs 1 to 1 Program

- inTune Apple Device Management
- VPP (Volume Purchasing Program)
- COMP NOW Parent Portal
- Ability to purchase from a supplier of your choice
(Device must meet the exact specifications of the program or it will not be accepted and enrolled)
- Relationship with APPLE Education



Our Model of Choice

BYOX

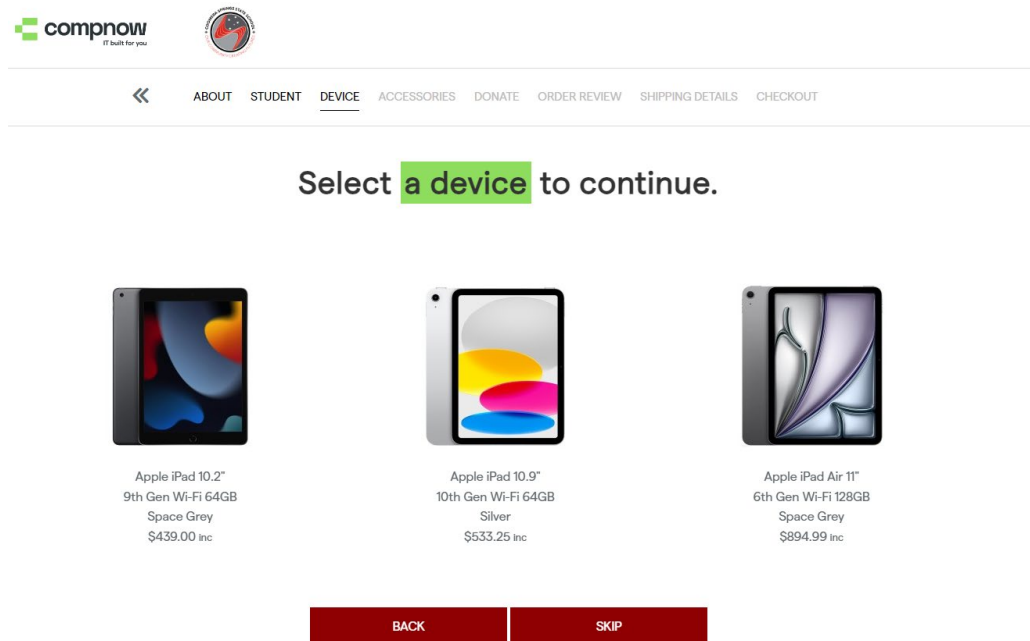


Coomera Springs has adopted Model 3. We have specific devices that can be accepted into the program, with multiple purchasing options.



Parent Purchase Options

- Option 1 - Parent to purchase a device from a supplier their choice. The iPad must meet the exact specifications which can be seen on our website.
- Option 2 - CompNow Parent Portal



The screenshot shows the CompNow Parent Portal interface. At the top left is the CompNow logo with the tagline "IT built for you" and the Columbia Springs State School logo. A navigation bar includes a back arrow and links for ABOUT, STUDENT, DEVICE (which is underlined), ACCESSORIES, DONATE, ORDER REVIEW, SHIPPING DETAILS, and CHECKOUT. The main heading reads "Select a device to continue." Below this, three iPad models are displayed as selectable options:

Device Model	Specifications	Price
Apple iPad 10.2"	9th Gen Wi-Fi 64GB Space Grey	\$439.00 inc
Apple iPad 10.9"	10th Gen Wi-Fi 64GB Silver	\$533.25 inc
Apple iPad Air 11"	6th Gen Wi-Fi 128GB Space Grey	\$894.99 inc

At the bottom of the screen are two red buttons: "BACK" and "SKIP".



iPad Models for 2025?

- Our Purchasing options for 2025

1. iPad 9th Gen model Wi-Fi (64GB) iPad from ~\$439
2. iPad 10th Gen model Wi-Fi (64GB) iPad from ~\$534
3. iPad Air M2 6th Gen Wi-Fi (128GB). iPad from ~\$894

All iPads in the program must include:

- Glass screen protector
- Your choice of Protective case w/Keyboard

Optional:

- Extended Warranty - 3 Yrs
- Apple Care – 2 Yrs
- Stylus
- Carry Bag



Add any **extra accessories.**



Logitech Rugged Folio Case
w/ Keyboard for iPad 9th Gen
\$179.00 inc



Logitech Rugged Folio
Combo 4
for iPad 10th Gen
\$159.00 inc



Logitech Combo Touch
for iPad Air 11"
\$249.00 inc



LS Premium Tempered Glass
For iPad 10th Gen
\$13.90 inc



LS Tempered Glass
for iPad 10.2
\$13.90 inc



Panzer SAFE Screen Protector
for iPad Air 11"
\$26.95 inc

Can I use an iPad I already own for this 1:1 program?

- Yes, if it meets the exact specifications communicated by the school
 - Less than 2 years old (purchased new in 2023 or 2024)
 - Minimum 64 GB storage
 - Minimum screen size of 10"
 - Must be iPad(not Samsung or other brand)
- Device must:
 - Have an AppleID setup
(For connection purposes)
- Contact school IT to check if your device meets the criteria.

IT@CoomeraSpringsSS.eq.edu.au



What is inTune? – How will it be used in the classroom?

- InTune is a leading device management solution for Mac, iPad, iPhone, and Apple TV.
- InTune secures and manages devices automatically across the entire school.
- Our IT Department uses inTune to manage all school applications, paid and unpaid.



Can I still use the iPad in Home Environment?

- **Yes**, with your family created Apple ID you can continue to utilise the iPad in a traditional manner at home (No functionality will be impeded on the student's iPad whilst at home)
- You will still be able to Sync Pictures, Music, Apps, Videos from iTunes or iCloud on your own home PC or MacBook



What technical support will be available to students in school?

- Technical support will be offered if needed for initial connection to our school network and a level of support will be offered in class when requested by a Teacher.
- Both video and step-by-step guides **are** available on our website on how to enroll your iPad. This can be completed at school or at home.



What filtering will be provided when students connect their BYOD?

Within School Grounds

- The standard filter which is currently provided on the school network will apply to student owned devices as long as they connect to the school network in line with our schools BYOD and ICT agreements.
- Students are not permitted to connect to any other network whilst at school (including 4G/5G).

Outside of School Grounds

- Private internet connection can be used



How will devices be connected to the school network?

- Students will be provided with wireless access on the BYOD network after the BYOD parental permission has been signed and returned.
- Once signed and returned the iPad can be setup using the enrollment guide on our website from school or at home.
- Coomera Springs State School will provide technical support to ensure that students can access our secured wireless network.
- If you have not signed and returned the iPad, your child may be disconnected from the BYOD Network



Parent Responsibilities

- Parents can link credit card information but it is not required
- The created Apple ID Security Questions & Answers must be stored in a safe/secure location
- All devices will stay in their protective case whilst in transit to and from school
- We also strongly recommend that students have a school bag which is suitable for transporting the device safely.
 - Please ensure both you and your child knows their iPad passcode.





What about security, theft and damage to the device?

- Devices will be the responsibility of the student while at school.
- Devices will be stored in classrooms during class time and at break time.
- Students will be educated in the proper care and appropriate use of their device.
- If in the event of Theft, parents/guardians must file a police report and inform the school of the incident ASAP





What happens if a student uses a device inappropriately?

- The school's acceptable use agreement highlights the Acceptable Use and Behaviour Policy which outlines the consequences for inappropriate use of devices and network.
- Students and their parents will be required to sign agreements that these policies will be adhered to and that consequences of policy breaches are understood before network access is provided.
- These documents are available on our website for 2025.



What training will be provided for students?

- As part of the introduction of a 1:1 program students will undergo class training on Acceptable Use as well being educated in CyberSafety.
- Students will also receive an education; health and safety when using electronic devices, Cyberbullying and Cybersafety, plus anything else which the school deems appropriate.
- File management tips and techniques are also delivered to students, ensuring best use of our digital storage solutions.

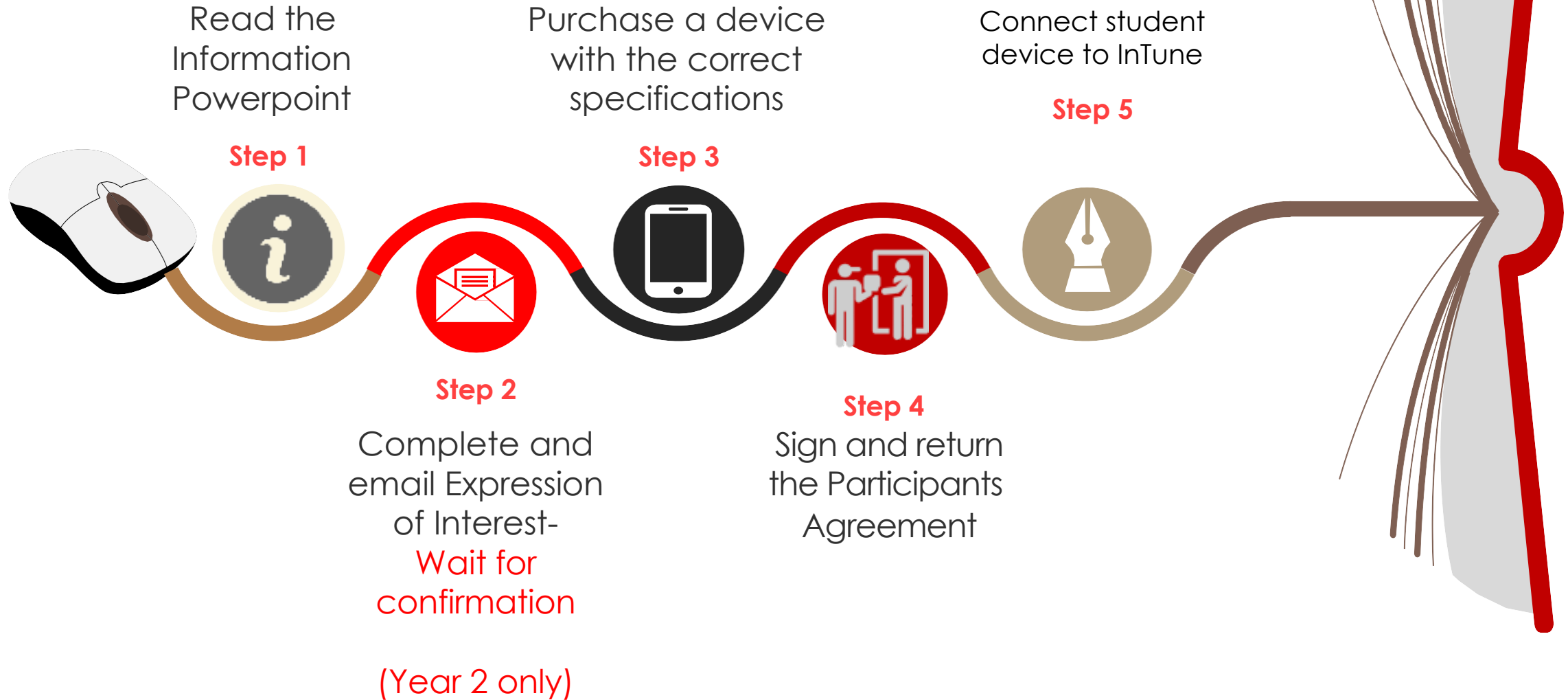


Student access to iPad options

- Purchase device outright from preferred supplier
- Payment plan from provider of choice
 - e.g. CompNow Buy Now Pay Layer (Humm90)
- Loaned school device



1:1 Student iPad Program Entry Process for 2025



Important Points

- Registrations (for Year 2) are available on our website. This has been emailed out.
- Participants Agreement is also on the website to be filled out for 2025.





Questions?

Email: graff1@eq.edu.au

